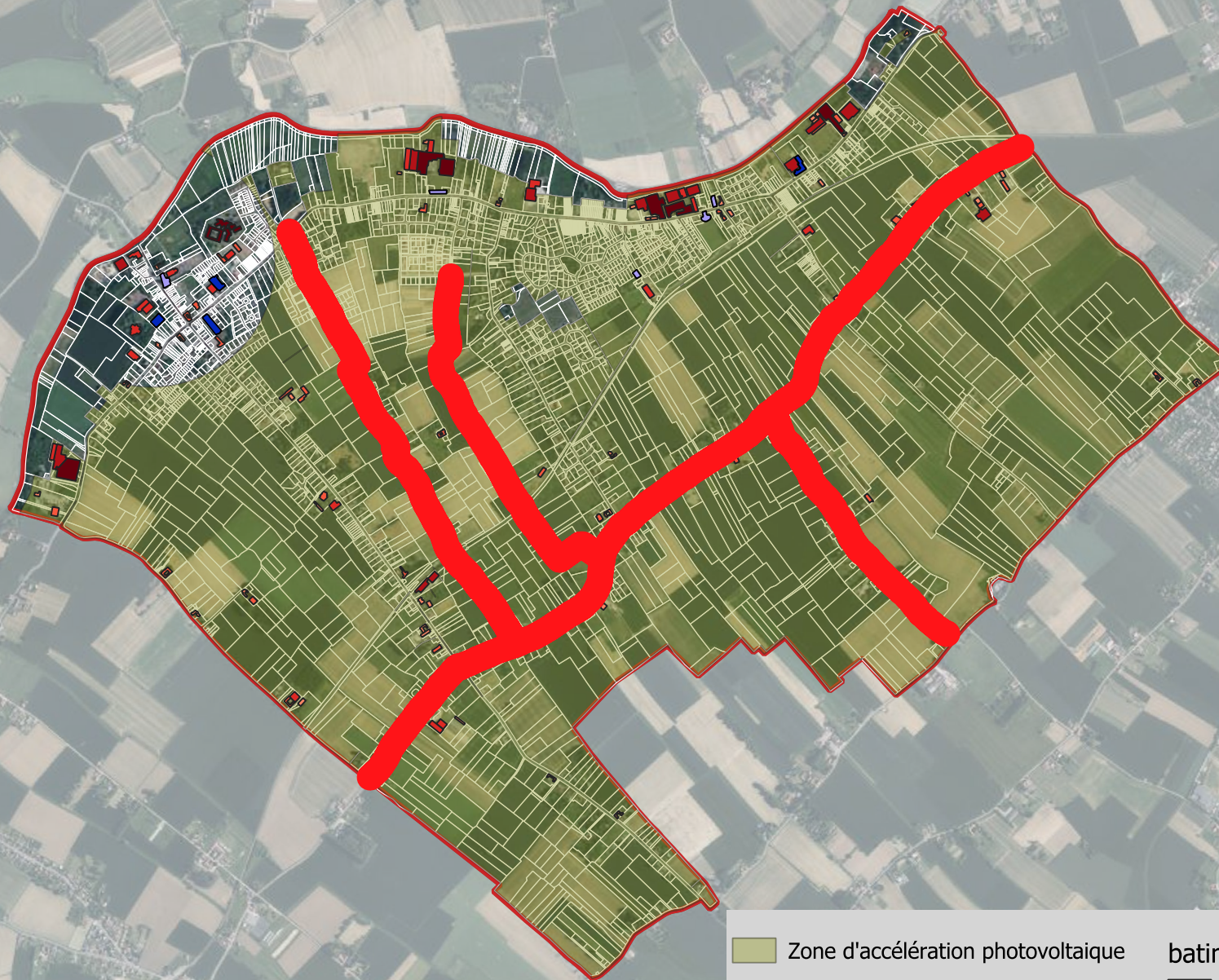





ZAER photovoltaïque Saily-sur-la-Lys



 Zone d'accélération photovoltaïque


Parking d'une superficie :


 500 - 1500 m²

 > 1500 m²


batiment avec une capacité :

 200 000 - 500 000 kWh/an

 500 000 - 1 000 000 kWh/an

 1 000 000 - 2 000 000 kWh/an

 2 000 000 - 4 000 000 kWh/an

 > 4 000 000 kWh/an